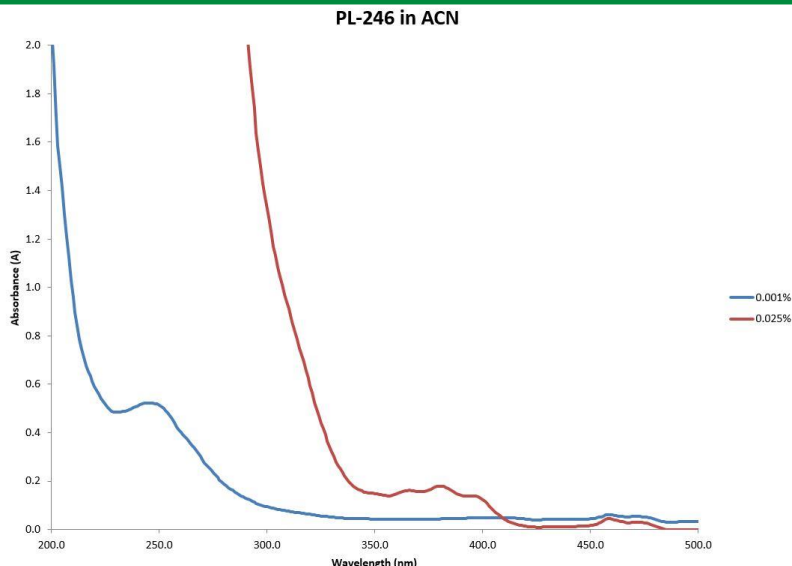


## Item # PL-246, PHOTOINITIATOR BLEND



PL-246 is a liquid photoinitiator compound developed specifically for white and pastel pigmented systems as well as thicker clear films. It provides a perfect balance between surface cure and through cure to enable the best possible adhesion in these systems. Because it's a liquid, it works well as a press side additive for the printer.

PL-246 is soluble in most monomers, oligomers and pre-polymers. It is insoluble in H<sub>2</sub>O.

**Typical Applications:** White and pastel inks and coatings, thicker clear coatings for graphic arts, wood, plastics & metals. Adhesives.

**Performance Properties:**

- Very fast curing
- Excellent through and surface cure
- Low yellowing
- Easy to use liquid

### TYPICAL PROPERTIES

|                        |                       |
|------------------------|-----------------------|
| Appearance             | Light yellow liquid   |
| Viscosity @ 25°C (cps) | 4,000 – 8,000         |
| Odor                   | Faint, characteristic |
| Usage Levels           | 2 - 8%                |
| Specific Gravity       | 1.16 g/mL             |

All Information contained in this data sheet is given in good faith and without liability. It is intended to serve only as guidance. Users are advised to conduct their own evaluation of the product to determine its proficiency into products and processes. Users should ensure that the use of the product complies with all applicable current legislation. 09/2016