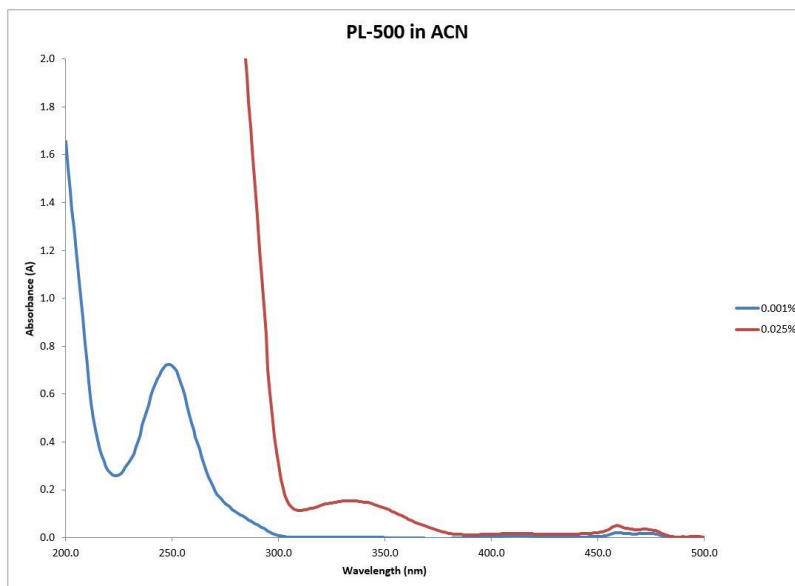


Item # PL-500, PHOTOINITIATOR BLEND



PL-500 is a eutectic blend made up of a 1:1 mixture of PL-CPK and PL-BPO. It is well suited for applications where ease of use and good surface cure are needed. PL-500 is soluble in most monomers, oligomers and pre-polymers. It is insoluble in H₂O.

Typical Applications: Clear coatings for graphic arts, wood, plastics & metals. Inks. Adhesives.

Performance Properties:

- Very fast curing
- Excellent surface cure
- Easy to use liquid

TYPICAL PROPERTIES

Appearance	Light yellow liquid
Boiling Point	>250°C
Odor	Faint, characteristic
Usage Levels	0.5-5.0%
Specific Gravity	1.10 g/mL

All Information contained in this data sheet is given in good faith and without liability. It is intended to serve only as guidance. Users are advised to conduct their own evaluation of the product to determine its proficiency into products and processes. Users should ensure that the use of the product complies with all applicable current legislation. 09/2016