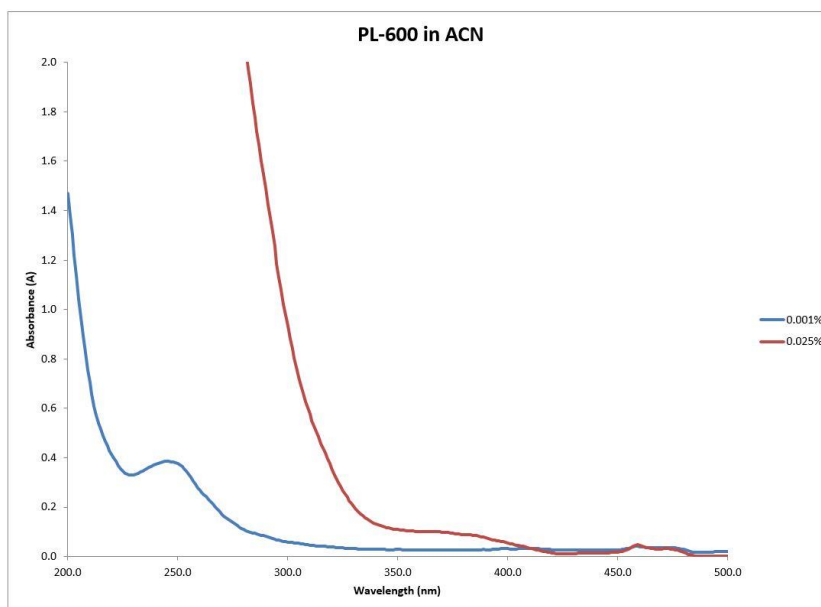


## Item # PL-600, PHOTOINITIATOR BLEND



PL-600 is a liquid photoinitiator compound developed specifically for white and pastel pigmented systems as well as thicker clear films. It provides a perfect balance between surface cure and through cure to enable the best possible adhesion in these systems. Because it's a liquid, it works well as a press side additive for the printer. PL-600 is soluble in most monomers, oligomers and pre-polymers. It is insoluble in H<sub>2</sub>O.

**Typical Applications:** White and pastel inks and coatings, thicker clear coatings for graphic arts, wood, plastics & metals. Adhesives.

**Performance Properties:**

- Very fast curing
- Excellent surface cure
- Low yellowing
- Easy to use liquid

TYPICAL PROPERTIES

Appearance	Light yellow liquid
Viscosity @ 25°C (cps)	500 – 1,000
Odor	Faint, characteristic
Usage Levels	2-8%
Specific Gravity	1.13 g/mL