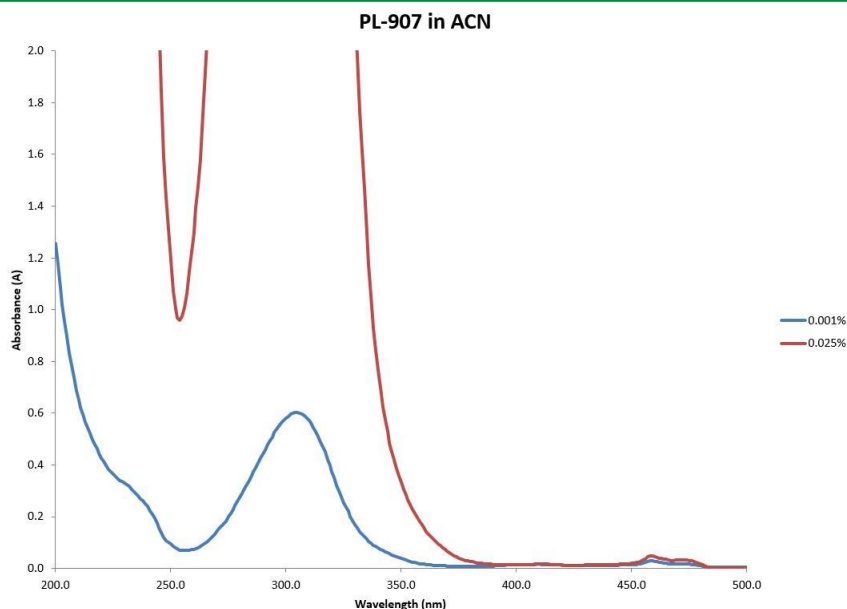


Item # PL-907, 2-Methyl-1-[4-(Methylthio)phenyl]-2-(4-Morpholinyl)-1-Propanone



2-Methyl-1-[4-(methylthio) phenyl]-2-morpholino propan-1-one is a type I photoinitiator primarily used in pigmented systems. It is oftentimes used with PL-ITX as a sensitizer to enhance the curing efficiency in inks. It is soluble in most monomers, oligomers and pre-polymers but insoluble in H₂O.

Typical Applications: Printing inks such as inkjet, flexo, screen, litho and dry offset, electronics & adhesives

Performance Properties:

- Excellent through cure
- Good in pigmented systems

TYPICAL PROPERTIES

Appearance	Light beige powder
Molecular Formula	C ₁₅ H ₂₁ NO ₂ S
Molecular Weight	279.4
Melt Point	73-76°C
Boiling Point	>250°C
Specific Gravity	1.19 g/mL
Usage Levels	0.3-5%