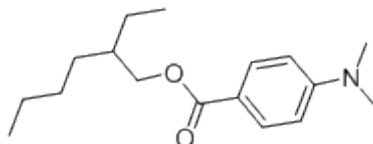


Technical Data Sheet

PL-EHA



Description

2-Ethylhexyl 4-dimethylamino benzoate is a tertiary amine synergist typically used in combination with type II photoinitiators such as Benzophenone. It is best known for its ability to promote surface cure. It is soluble in most monomers, oligomers and pre-polymers but insoluble in H₂O.

Performance Properties

Very fast curing amine synergist
Excellent solubility

Typical Applications

Printing inks such as inkjet, flexo, screen, litho and dry offset.

Product Highlights

Appearance: Clear liquid
Chem. Class Amino benzoate
Mol. Formula: C₁₇H₂₇NO₂
Mol. Wt. 277.4
Boiling Point > 250 °C
Spec. Gravity 0.99
Odor: Faint, characteristic
Abs. Peaks 230, 310
Usage Levels 0.5 – 5.0%

All Information contained in this data sheet is given in good faith and without liability. It is intended to serve only as guidance. Users are advised to conduct their own evaluation of the product to determine its proficiency into products and processes. Users should ensure that the use of the product complies with all applicable current legislation.