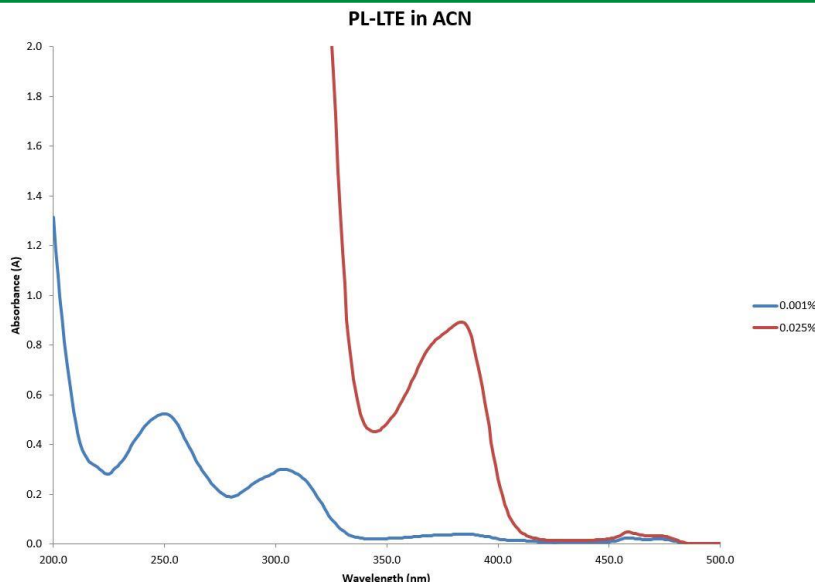


PL-LTE: Photoinitiator Blend



PL-LTE is a liquid photoinitiator compound developed specifically for lighter colored (non white) inks and coatings. It provides an optimum balance between surface cure and through cure to enable the best possible adhesion in these systems. Because of its optimum viscosity, it can be used in flexo, screen and paste inks without negatively effecting rheology. It is also well suited as a press side additive for the printer.

PL-LTE is soluble in most monomers, oligomers and pre-polymers. It is insoluble in H₂O.

Typical Applications: Light to moderate colored inks and coatings, clear coatings for graphic arts, wood and plastics.

Performance Properties:

- Very fast curing
- Excellent through and surface cure
- Easy to use liquid

TYPICAL PROPERTIES

Appearance	Pale yellow liquid
Viscosity @ 25°C (cps)	100 - 300
Boiling Point	>250°C
Specific Gravity	1.14 g/mL
Odor	Faint, characteristic
Usage Levels	4.0 – 12.0%
Peak Absorbance, nm	250, 304, 384

All Information contained in this data sheet is given in good faith and without liability. It is intended to serve only as guidance. Users are advised to conduct their own evaluation of the product to determine its proficiency into products and processes. Users should ensure that the use of the product complies with all applicable current legislation. 09/2016