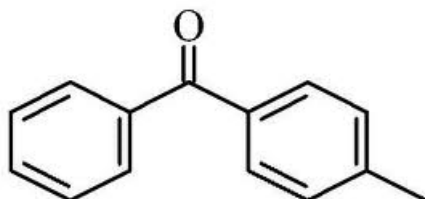


Technical Data Sheet

PL-MBP



**Description**

4-Methyl benzophenone is a fast curing type-II photoinitiator. In the presence of O<sub>2</sub>, the use of an amine co-initiator is recommended. It is soluble in most monomers, oligomers and pre-polymers. It is insoluble in H<sub>2</sub>O.

**Performance Properties**

Very fast curing  
Excellent hardness

**Typical Applications**

Coatings for graphic arts, wood, plastics, metals and optical fiber. Flexo, screen, litho, dry offset and inkjet. Adhesives.

**Product Highlights**

Appearance: Off white flakes  
Mol. Formula: C<sub>14</sub>H<sub>12</sub>O  
Mol. Wt. 196.25  
Melt Point: 57 °C  
Boiling Point 326 °C  
Spec. Gravity 1.10  
Odor: Sweet, characteristic  
Abs. Peaks 254  
Usage levels 1-8%

All Information contained in this data sheet is given in good faith and without liability. It is intended to serve only as guidance. Users are advised to conduct their own evaluation of the product to determine its proficiency into products and processes. Users should ensure that the use of the product complies with all applicable current legislation.