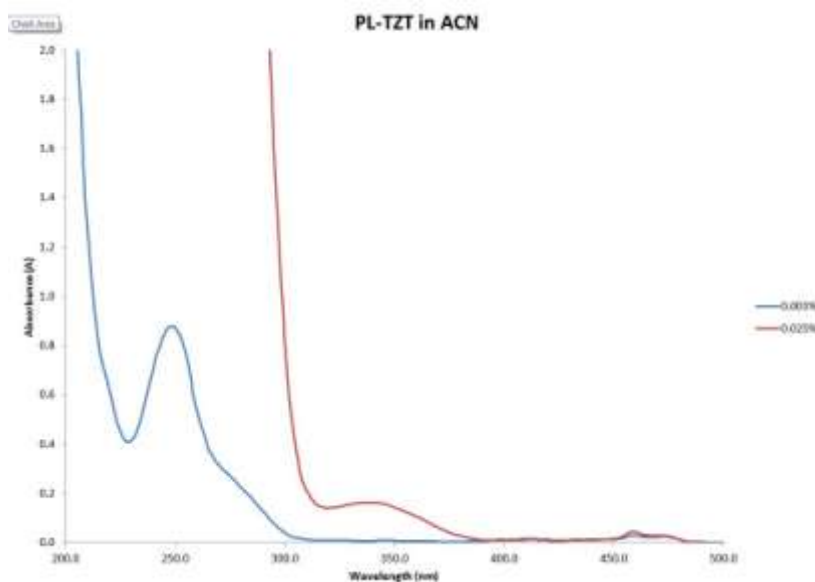


PL-TZT: Benzophenone Derivative Blend



PL-TZT is a fast curing type-II photoinitiator. In the presence of O₂, the use of an amine co-initiator is recommended. It is soluble in most monomers, oligomers and pre-polymers. It is insoluble in H₂O.

Typical Applications: Coatings for graphic arts, wood, plastics, metals and optical fiber. Flexo, screen, litho, dry offset and inkjet. Adhesives.

Performance Properties:

- Very fast curing
- Excellent hardness

TYPICAL PROPERTIES

Appearance	Clear yellow liquid
Boiling point	>300°C
Specific Gravity	1.05 g/mL
Odor	Sweet, characteristic
Abs. Peak	254
Usage Levels	0.5 – 4.0%

conduct their own evaluation of the product to determine its proficiency into products and processes. Users should ensure that the use of the product complies with all applicable current legislation. 09/2016